

UBS 
Hoists & Access



www.ubsl.net

[Tel: 01277 363936](tel:01277363936)

© UBS Hoists & Access Ltd, 2024. All rights reserved.
Head Office: 43 London Road, Stanford Rivers, Ongar, Essex, CM5 9PJ

About Us

UBS has been operating in the UK for more than 30 years and has been involved in some of the most prestigious high-rise projects in that time, providing both hoisting and access systems.

The UK arm of UBS incorporated in 2005 and has continued to grow into the leading hoist supplier in the country. We are currently involved in many of the present high-rise projects being constructed in and around London.



The UBS Approach

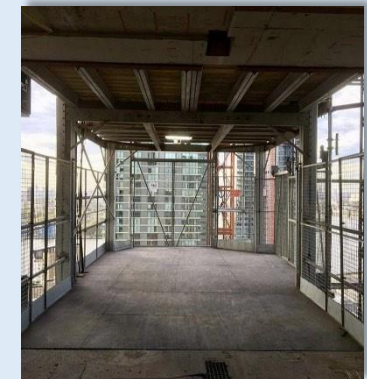
Whether you are building for high rise commercial, residential, and institutional market segments your needs are paramount.

Our experienced team will take the time to understand your requirements and provide effective and innovative hoist and access solutions. No job is too large or too complicated, but we are also able to cater for low to medium rise projects and specialist developments across the country. In any case you will receive a professional and competent service.

Common Tower

How do you solve the high-rise construction dilemma of maximising access for personnel and materials whilst minimising the impact on the building? UBS have the answer, their Aluminium Common Tower system. UBS Common Towers allow comprehensive hoisting facilities to be installed on new build and renovation projects with minimum interference to the construction programme. Hoists of all types can be tied to and grouped around the Common Tower structures. The use of Common Towers maximises the capability for increased access whilst minimising the quantity and size of openings into the building. With our newly designed square leg Common Tower we can now go higher than ever before.

- Allows concentration of hoisting facilities into one common structure permitting maximum utilisation of mechanised handling facilities.
- Reduces the number of cladding panels left out for access.
- Aluminium components allow fast assembly of the Common Tower and safe installation to the building.



Testimonial

Construction manager on the Beetham Tower Project, Jack Headland:

“The biggest benefit of the UBS common tower is that it is such a neat arrangement that even running four hoists, it only requires one set of ties to the building. It reduces the number of cladding panels we must leave off during construction, so it makes life so much simpler for us at the end of the day. It also confines loading activities to a much smaller area, so it improves working efficiency. It has been a massive advantage to us on a large project like this.”

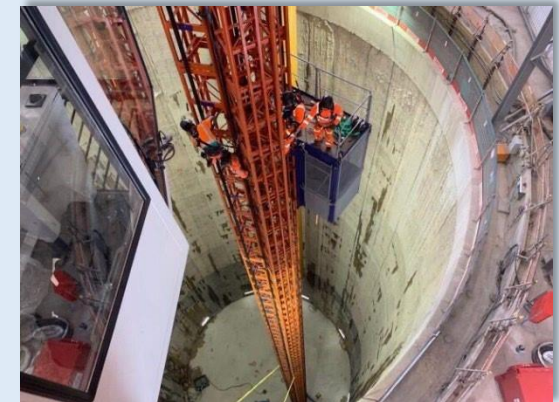
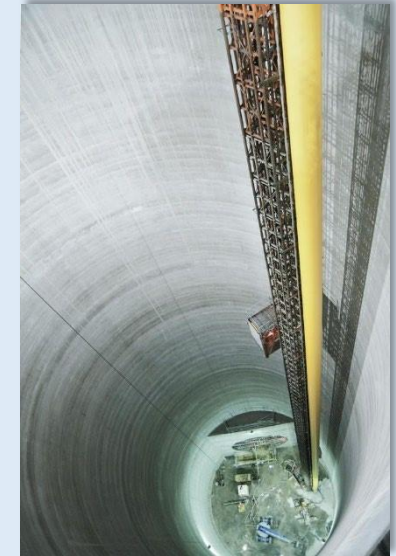
Tri-mast

UBS are continuing their innovative approach to supply access systems on some of the tallest buildings throughout the UK and have also been working deep underground on the Lee Tunnel Project at Beckton and Stratford and the Tideway Tunnels schemes across London.

UBS were able to come up with an adaptation of a scheme used to install hoists on tall structures with very large tie distances. The scheme for the Lee Tunnel Project has required the installation of hoists from the base of the shaft, but without a tie to the shaft until ground level, up to 80m above the base of the shaft. This was so the slipform rig within the shaft could travel unimpeded by any ties from the hoist to the outside of the rough shaft. The UBS scheme utilised the Tri-mast system where 3 hoist masts are erected as a single mast structure to allow the required tie distance of 80m, 4 times the normal tie spacing for a hoist.

The Tri-mast hoist system has offered the site access to the base of the shaft and access to the moving slipform rig deck, with minimal changes being made to the design of the shaft base to accommodate the base fixing required for a hoist of this height.

As of March 2020, the Tri-mast system will be installed above ground to aid site in completing the cladding to the project. The mast will have one tie at roof level and a removable pedestrian bridge so that all cladding panels can be fitted whilst the hoist is in position.



Mast Climbers

Mast Climbing Work Platforms (also called Mast Climbers) are a modular system of deck sections and mast sections that are pinned and/or bolted together to create a platform of a pre-determined length and height. The overall length of the platform will be determined by several factors; for example, the length of the elevation, the payload required and the maximum allowable configuration of the platform. The overall height is determined by the height of the structure to be accessed.

Mast Climbers can be used on many applications on both medium/high rise refurbishment and new build construction.

The benefits of using Mast Climbing Work Platforms over more traditional access methods include but are not limited to:

- Speed of installation – 40m high x 20m long elevation ready for use within 3 days (subject to local conditions).
- Exact working height – reduced bending and stretching.
- No adaption required to adjust working height – just operate the up or down control.
- Reduced material handling – less damage.
- Fewer ties to the building façade.

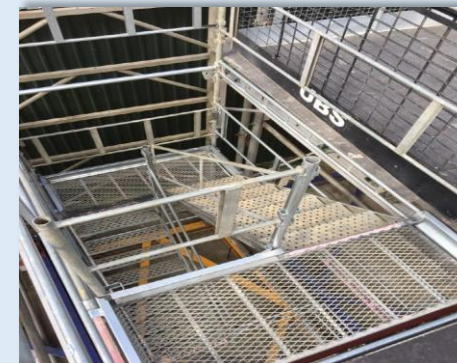
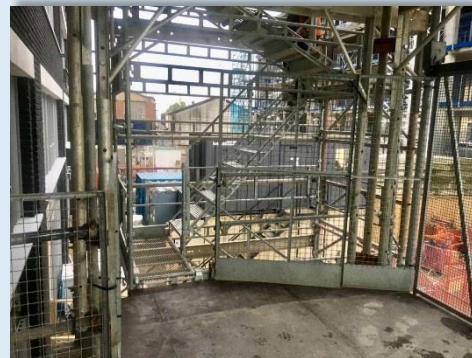
At UBS Hoists & Access Ltd we can offer a full comprehensive site survey along with AutoCAD drawings showing the platform layout proposals. We are also able to assist with all technical details that may be required.



The UBS Staircase



The UBS staircase is the safe solution to meeting working at height regulations. With a combination of steel construction inside our aluminium Common Tower system, UBS stair towers are robust enough for the toughest of jobs. Each stair tread and landing are non-slip and can be used across the range utilising existing components. The modular design simplifies the erection procedure meaning it can be incorporated with our Common Tower system or free standing alone.



Health & Safety

UBS has had a number of years' experience working with construction contractors on many projects. We are fully aware of the need to plan, co-ordinate and work with the main contractor to meet the demands of the project. Health & Safety has an extremely important part to play within the project. It is the Company policy to ensure that all reasonable and practicable measures are taken to ensure the Health & Safety of all its employees, the public and any other person who may be adversely affected by the Company's operations.

Training & Development

Training within UBS is ongoing to meet the changes within the industry generally and to ensure that our operatives have the necessary skills and competencies to carry out the job effectively and safely. All operatives and managers have been registered with the Construction Industry Training Board (CITB) and Construction Skills Certification Scheme (CSCS) scheme. As a minimum most of our operatives have completed triple STS, Slinger and Signaller course, working at height and NVQ Level 2. In addition to this a number of our operatives are trained appointed persons, crane supervisors and slinger signaller. Originally there was no recognised qualification for this. Now all erectors are trained to a high standard, ensuring safe, competent, and professional work on site.



Depots & Fabrication

We currently operate from our two depots, one in Hertfordshire, the other being in Essex with an experienced team of estimators, design engineers, operations and commercial management. We are continually adding to our hoist fleet and can offer a varied selection of hoists along with our Common Tower system. Within our depots we have a very knowledgeable team who prepare the hoists and fabricate components to very high standards ready for install on site. All our hoists are freshly painted, refreshed internally, run up and tested prior to being loaded. We can also take a shell and create a machine that looks brand new.



Technical & Design

From the initial tender stage our competent and experienced technical and design team can provide the most efficient and effective access solutions to any given project. UBS has for years been responsible for providing Access scaffolds and systems to many situations where options are limited. Problems can be solved. Coming up with innovative ideas, putting a design to it, proving the design using calculations and modelling is all part of the service UBS provide. We also use a selection of external engineering consultancies to provide us with CAT II and CAT III checks to follow current temporary works procedures.

Accreditations

UBS has received accreditation by Achilles on the Building Confidence Scheme, CHAS, FORS Silver, Construction Plant-Hire Association, ISO 9001, SMAS, CQMS and Constructionline



Our customers

UBS work with some of the largest names in UK construction including;

- Ballymore
- Balfour Beatty
- McLaren Construction
- HG Construction
- Vistry Group
- Mace
- Tideway Construction
- Ardmore
- Skanska
- C.J O'Shea
- Morgan Sindall
- Mount Anvil
- Countryside Partnerships
- And many more.

For more information, please visit our website www.ubsl.net or contact us on the details below:



Contact Us

Ricardo Miranda – Ricardo@ubsl.net

Mark Keeble - Mark@ubsl.net

Terry Bath - Terry.bath@ubsl.net

Ellise Ryan – Ellise@ubsl.net

Head Office - Sales@ubsl.net

Head Office & Hoist Department:

43 London Road

Stanford Rivers

Ongar, CM5 9PJ

Tel: 01277 363936

Follow us on

LinkedIn: UBS Hoists and Access